

WELCOME

NJDOT Pavement & Drainage Management & Technology

Robert Blight | Supervising Engineer

Nusrat Morshed | Principal Engineer



LOCAL AID

ON THE ROAD

ENVIRONMENTAL
BRIDGE • PAVEMENT
CIVIL RIGHTS • NJ I-BANK
SUBJECT MATTER EXPERTS

 **LOCAL AID**

SPRING
2020

LISTENING TOUR
MERCER • MORRIS • ESSEX • CUMBERLAND

ORGANIZATION

Pavement and Drainage Management & Technology

Susan Gresavage, Executive Manager



Pavement & Drainage
Management



Pavement Design
& Technology

PAVEMENT MANAGEMENT



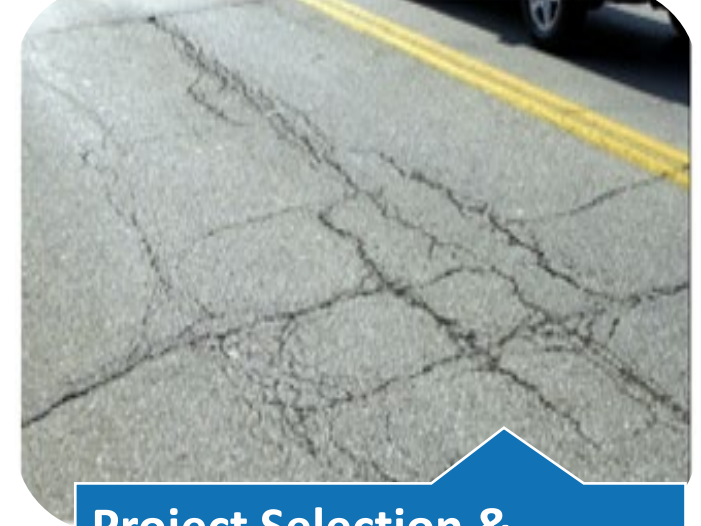
Data Collection

- Annual NJDOT Network Condition
 - Surface distress
 - Smoothness
- Ride Quality QA Testing
- Skid Resistance



Data Analysis & Reporting

- Network Performance
- Budget Needs
- Construction Quality Acceptance/Contractor Pay Adjustment



Project Selection & Initiation

Recommend projects for:

- Resurfacing
- Major Rehab, Reconstruction
- Preventive Maintenance

DRAINAGE MANAGEMENT



Maintain NJDOT DMS

- Identify and Prioritize:
 - Flooding Locations
 - Icing Locations
- Review Excess Land Requests



Drainage Project Selection

- Initiate New Capital Drainage Projects
- Initiate Low Cost High Value Drainage Solutions



Drainage Technology

- Identify New Technologies
- Develop Specifications
- Implement

PAVEMENT DESIGN & TECHNOLOGY



Pavement Design

- Select Pavement Treatments
- Design Pavement Structure
- Review Consultant and Developer Pavement Designs



Pavement Technology

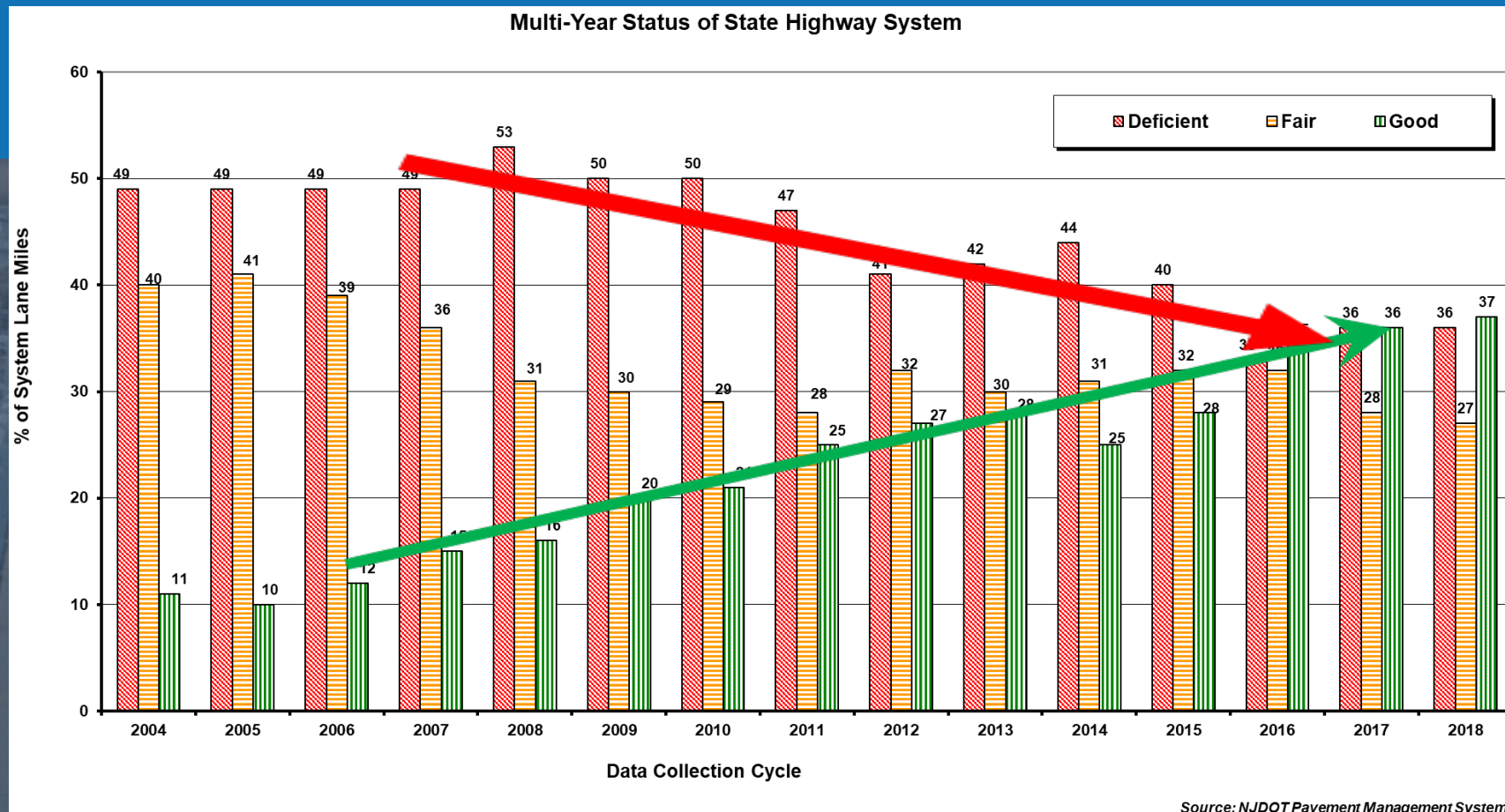
- Identify new technologies
- Research to ensure viable applied research solutions
- Develop Specifications
- Implement on projects



Pavement Support

- Resolve Construction Issues
- Perform Forensic Evaluations
- Coordinate with industry, FHWA, and other agencies

“Right Treatment, On the Right Road, At the Right Time, for the Right Cost”



Pavement & Drainage Management & Technology

Pavement & Drainage Management

Narinder Kohli | Narinder.Kohli@dot.nj.gov

Pavement Design & Technology

Robert Blight | Robert.Blight@dot.nj.gov

Pavement & Drainage Management & Technology

Susan Gresavage | Susan.Gresavage@dot.nj.gov

THANK YOU!

☎ (609) 649-9395

🌐 www.njdotlocalaidrc.com

✉ DOT-LocalAID.ResourceCenter@dot.nj.gov

Follow the Local Aid Resource Center on Social Media

🐦 @NJDOTLOCALAID

📷 @NJDOTLARC

f facebook.com/NJDOTLocalAid

▶ NJDOT Local Aid Resource Center

in NJDOT Local Aid Resource Center

